



## 14 CRYSTAL *yarn*

Crystal Yarn is an outstanding innovation that features Beads and Crystal Pearls pre-threaded onto high quality yarns. This exciting product opens up many new application possibilities, particularly in the fields of hand- or machine embroidery, knitting and weaving. It is especially suited to the creation of designs with a very exclusive look. Crystal Yarn is a ready-to-use product available in a large and very diverse assortment that is suitable for all segments.



## Article Explanation

<<<

### 59 200



<b>D</b>	01
<b>SS</b>	2 mm (5000)
<b>M</b>	25, 100 M
	<b>100%</b>

59 200	D	SS	M	100%
Article number	Distance between the crystals	Stone size	Minimum order quantity in metres (M)	Documentation size in %
	This article is available in a distance of 1 cm (approx.).	2 mm for article 5000		

## Ordering Example & Product Variety Explanation

<<<

59 200	/01	025	C040	001 SSHA
Article number	2-digit code for approximate distance between the crystals, separated from article number with a slash	Length	Type & colour of yarn	Colour of crystals
59000 (5301 3 mm)		025 25 m/spool	Type of yarn:	Please see the respective product matrix for all available code references.
59010 (5301 4 mm)		050 50 m/spool	A Synthetic Suede	
59100 (5810 3 mm)		100 100 m/spool	C Cotton	
59200 (5000 2 mm)		300 300 m/spool	K Cashmere	
	/01 1 cm		M Mohair	
	/03 3 cm		P Polyester	
	/08 8 cm		Colour of yarn:	
			012 Black	
			013 Bronze	
			014 Brown	
			016 Rose Water Opal	
			022 White	
			024 Black Diamond	
			025 Peridot	
			026 Padparadscha	
			032 Caribbean Blue Opal	
			033 Copper	
			034 Dorado	
			035 Cream	
			036 Golden Shadow	
			037 Light Siam	
			038 Montana	
			039 Powder Rose	
			040 Silver Shade	
			041 Smoked Topaz	
			042 Jet Hematite	
			043 Light Grey	
			044 Olivine	
			045 Pacific Opal	
			046 Vintage Rose	

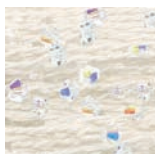
## Available Yarn & Crystal Colours

Crystal Yarn is available in 40 tone-on-tone configurations. Please see the respective product matrix for all available options.

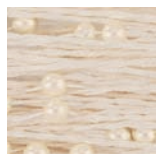
### Cotton Versions – 3 mm



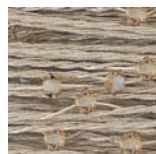
C022 001  
White yarn,  
Crystal Beads



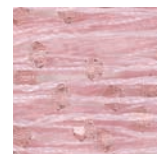
C035 001 AB  
Cream yarn,  
Crystal Aurore  
Boreale Beads



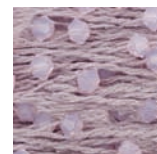
C035 620  
Cream yarn,  
Crystal Cream  
Pearls



C036 001 GSHA  
Golden Shadow  
yarn, Crystal  
Golden Shadow  
Beads



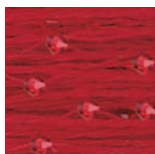
C046 319  
Vintage Rose yarn  
& Beads



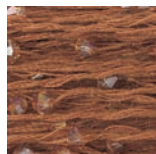
C016 395  
Rose Water Opal  
yarn & Beads



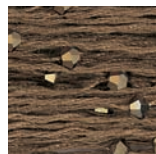
C039 352  
Powder Rose yarn,  
Crystal Powder  
Rose Pearls



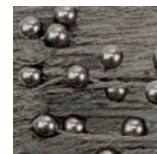
C037 227  
Light Siam yarn &  
Beads



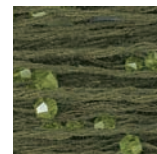
C033 001 COP  
Copper yarn &  
Beads



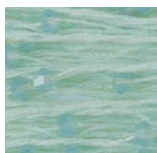
C034 001 DOR2  
Dorado yarn,  
Crystal Dorado 2x  
Beads



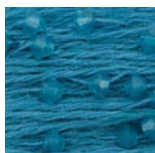
C014 815  
Brown yarn,  
Crystal Brown  
Pearls



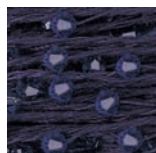
C044 228  
Olivine yarn &  
Beads



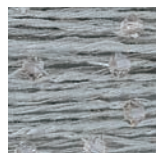
C045 390  
Pacific Opal yarn  
& Beads



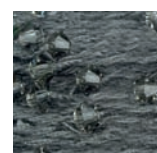
C032 394  
Caribbean Blue  
Opal yarn & Beads



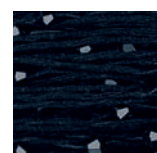
C038 207  
Montana yarn &  
Beads



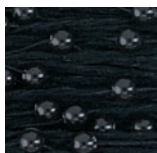
C040 001 SSHA  
Silver Shade yarn,  
Crystal Silver  
Shade Beads



C024 215  
Black Diamond  
yarn & Beads

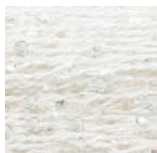


C012 280  
Black yarn,  
Jet Beads



C012 335  
Black yarn,  
Crystal Mystic  
Black Pearls

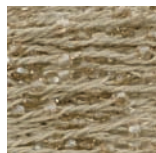
### Cotton Versions – 2 mm



C022 001  
White yarn,  
Crystal Beads



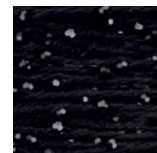
C035 001 AB  
Cream yarn,  
Crystal Aurore  
Boreale Beads



C036 001 GSHA  
Golden Shadow  
yarn, Crystal  
Golden Shadow  
Beads



C040 001 SSHA  
Silver Shade yarn,  
Crystal Silver  
Shade Beads



C012 280  
Black yarn,  
Jet Beads

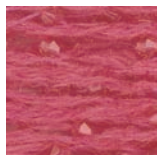
Classic Colours  
Exclusive Colours

# Crystal Yarn

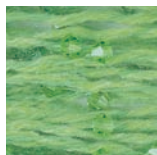
## Cashmere Versions



K022 001  
White yarn,  
Crystal Beads



K026 542  
Padparadscha  
yarn & Beads

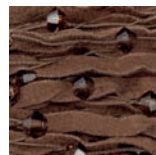


K025 214  
Peridot yarn &  
Beads

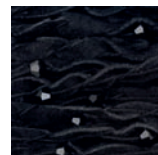
## Synthetic Suede Versions



A036 001 GSHA  
Golden  
Shadow yarn,  
Crystal Golden  
Shadow Beads



A041 220  
Smoked Topaz  
yarn & Beads

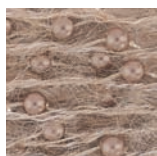


A012 280  
Black yarn,  
Jet Beads

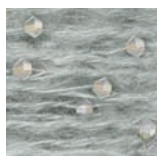
## Mohair Versions



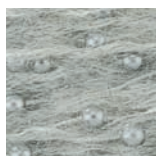
M035 001  
Cream yarn,  
Crystal Beads



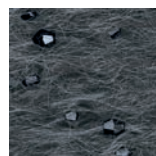
M013 295  
Bronze yarn,  
Crystal Bronze  
Pearls



M043 383  
Light Grey yarn &  
Light Grey Opal  
Beads

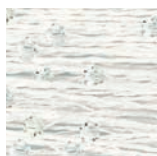


M043 616  
Light Grey yarn &  
Crystal Light Grey  
Pearls

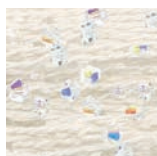


M042 280 HEM  
Jet Hematite yarn  
& Beads

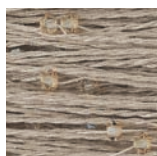
## Polyester Versions



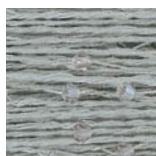
P022 001  
White yarn,  
Crystal Beads



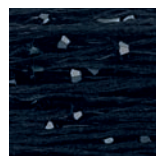
P035 001 AB  
Cream yarn,  
Crystal Aurore  
Boreale Beads



P036 001 GSHA  
Golden  
Shadow yarn,  
Crystal Golden  
Shadow Beads



P040 001 SSHA  
Silver Shade yarn,  
Crystal Silver  
Shade Beads

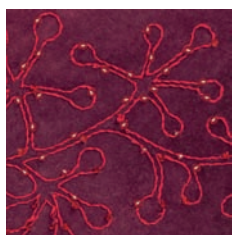


P012 280  
Black yarn,  
Jet Beads

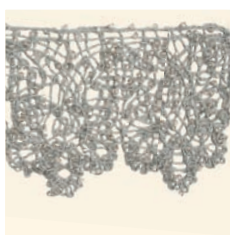
## Application Examples

<<<

Crystal Yarn opens up many new application possibilities, particularly in the fields of embroidery and knitting, and is especially suited to the creation of designs with a very exclusive look. Please find herein some examples of the different possible looks of Crystal Yarn.



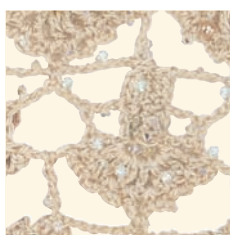
Embroidery



Lace



Hand knitting



Crochet

Classic Colours  
Exclusive Colours

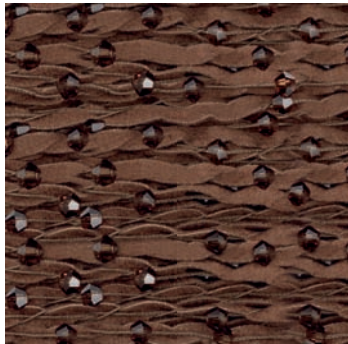
## 59 000 Cotton Versions\*



Colour
Crystal (001)
Crystal AB (001 AB)
Crystal Copper (001 COP)
Crystal Dorado 2x (001 DOR2)
Crystal Golden Shadow (001 GSHA)
Crystal Silver Shade (001 SSHA)
Jet (280)
Black Diamond (215)
Caribbean Blue Opal (394)
Light Siam (227)
Montana (207)
Olivine (228)
Pacific Opal (390)
Rose Water Opal (395)
Vintage Rose (319)

Colour of Yarn	C012 Cotton Black	C016 Cotton Rose Water Opal	C022 Cotton White	C024 Cotton Black Diamond	C032 Cotton Caribbean Blue Opal	C033 Cotton Copper	C034 Cotton Dorado	C035 Cotton Cream	C036 Cotton Golden Shadow	C037 Cotton Light Siam	C038 Cotton Montana	C040 Cotton Silver Shade	C044 Cotton Olivine	C045 Cotton Pacific Opal	C046 Cotton Vintage Rose	Distance	3 cm	8 cm
Crystal (001)			■														■	■
Crystal AB (001 AB)								■									■	■
Crystal Copper (001 COP)						■											■	■
Crystal Dorado 2x (001 DOR2)							■										■	■
Crystal Golden Shadow (001 GSHA)									■								■	■
Crystal Silver Shade (001 SSHA)												■					■	■
Jet (280)	■																■	■
Black Diamond (215)				■													■	■
Caribbean Blue Opal (394)					■												■	■
Light Siam (227)										■							■	■
Montana (207)											■						■	■
Olivine (228)												■					■	■
Pacific Opal (390)													■				■	■
Rose Water Opal (395)		■												■			■	■
Vintage Rose (319)															■		■	■

## 59 000 Synthetic Suede Versions\*\*



Colour
Crystal Golden Shadow (001 GSHA)
Jet (280)
Smoked Topaz (220)

Colour of Yarn	A012 Synthetic Suede Black	A036 Synthetic Suede Golden Shadow	A041 Synthetic Suede Smoked Topaz	Distance	3 cm
Crystal Golden Shadow (001 GSHA)		■			■
Jet (280)	■				■
Smoked Topaz (220)			■		■

\* Available on 50 m & 300 m spool  
 \*\* Available on 25 m & 100 m spool

# Crystal Yarn

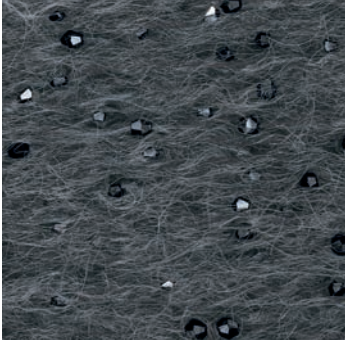
## 59 000 Cashmere Versions\*



<b>Colour of Yarn</b>	K022 Cashmere White	K025 Cashmere Peridot	K026 Cashmere Padparadscha	<b>Distance</b>	3 cm	8 cm
-----------------------	---------------------	-----------------------	----------------------------	-----------------	------	------

<b>Colour</b>	Crystal (001)	Padparadscha (542)	Peridot (214)
---------------	---------------	--------------------	---------------

## 59 000 Mohair Versions\*



<b>Colour of Yarn</b>	M042 Mohair Jet Hematite	M043 Mohair Light Grey	<b>Distance</b>	3 cm	8 cm
-----------------------	--------------------------	------------------------	-----------------	------	------

<b>Colour</b>	Jet Hematite (280 HEM)	Light Grey Opal (383)
---------------	------------------------	-----------------------

## 59 000 Polyester Versions\*



<b>Colour of Yarn</b>	P012 Polyester Black	P022 Polyester White	P035 Polyester Cream	P036 Polyester Golden Shadow	P040 Polyester Silver Shade	<b>Distance</b>	3 cm	8 cm
-----------------------	----------------------	----------------------	----------------------	------------------------------	-----------------------------	-----------------	------	------

<b>Colour</b>	Crystal (001)	Crystal AB (001 AB)	Crystal Golden Shadow (001 GSHA)	Crystal Silver Shade (001 SSHA)	Jet (280)
---------------	---------------	---------------------	----------------------------------	---------------------------------	-----------

\*Available on 50 m & 300 m spool

# Crystal Yarn

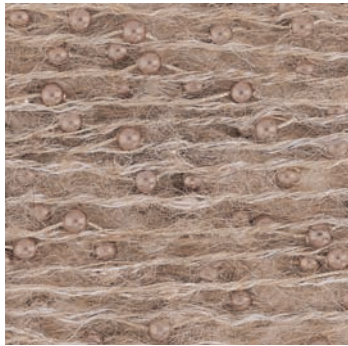
## 59 010\*



Colour
Crystal (001)

Colour of Yarn	Distance
M035 Mohair Cream	3 cm
	8 cm

## 59 100\*\*



Colour
Crystal Bronze Pearl (295)
Crystal Brown Pearl (815)
Crystal Cream Pearl (620)
Crystal Light Grey Pearl (616)
Crystal Mystic Black Pearl (335)
Crystal Powder Rose Pearl (352)

Colour of Yarn	Distance
C012 Cotton Black	3 cm
C014 Cotton Brown	8 cm
C035 Cotton Cream	
C039 Cotton Powder Rose	
M013 Mohair Bronze	
M043 Mohair Light Grey	
	3 cm
	8 cm

## 59 200\*\*\*



Colour
Crystal (001)
Crystal AB (001 AB)
Crystal Golden Shadow (001 GSHA)
Crystal Silver Shade (001 SSHA)
Jet (280)

Colour of Yarn	Distance
C022 Cotton White	1 cm
C035 Cotton Cream	
C036 Cotton Golden Shadow	
C040 Cotton Silver Shade	
C012 Cotton Black	
	1 cm

\* Available on 50 m spool

\*\* Available on 50 m & 300 m spool

\*\*\* Available on 25 m & 100 m spool

## Product Composition & Technical Data

<<<

Type of Yarn	Cotton	Cashmere	Mohair	Polyester	Synthetic Suede
59000, 59100, 59200	4 ply 100% Cotton	2 ply 100% Cashmere 2 ply 100% Cotton	2 ply 66% Mohair 30% Polyamide 4% Wool 2 ply 100% Cotton	4 ply 100% Polyester	2 ply 100% Cotton 1 ply 55% Viscose 45% Acrylic
59010			2 ply 64% Wool 34% Mohair 2% Nylon 2 ply 100% Cotton		

### Number of Beads/Crystal Pearls per m

3 cm distance	~ 34 pcs	~ 34 pcs	~ 34 pcs	~ 34 pcs	~ 34 pcs
8 cm distance	~ 14 pcs	~ 14 pcs	~ 14 pcs	~ 14 pcs	
1 cm distance	~ 125 pcs				

### Indicative Fastness

Washing at 30°C	4	3/4	4	4	4/5
Light	3/4	4 (2 for white yarn)	4	4	4
Dry cleaning	4/5	3/4	4/5	4	

### Average Weight (m/kg)

59000/03	850	800	800	700	450
/08	1,450	1,450	1,350	1,300	
59010/03			315		
/08			550		
59100/03	850		800		
/08	1,450		1,350		
59200/01	530				

## Hints and Tips

<<<

- The Beads/Crystal Pearls may slip off at the beginning and the end of the Crystal Yarn.
- Some Beads/Crystal Pearls may unavoidably be damaged during the embroidery process.
- Slight variations in the colour of the yarn may occur among different dyeing lots. Those lie within a range of tolerance.
- One cotton version (colour cream) may be dyed, however, this definitely must be tested before production!
- Claims may be lodged for replacements up to 50 m. These claims are not valid for finished products.

## Quality Standards

<<<

Crystal Yarn complies with Swarovski's high quality standards that allow our customers to gain a market edge. This guaranteed quality corresponds to your high design requirements and contributes to the exclusivity of your products. Crystal Yarn is resistant to: light, seawater, perspiration, perfume, perchloroethylene, weak acid and alkaline solutions. The product is certified with Oeko-Tex Standard 100. It could appear that there are knots in the Crystal Yarn.